



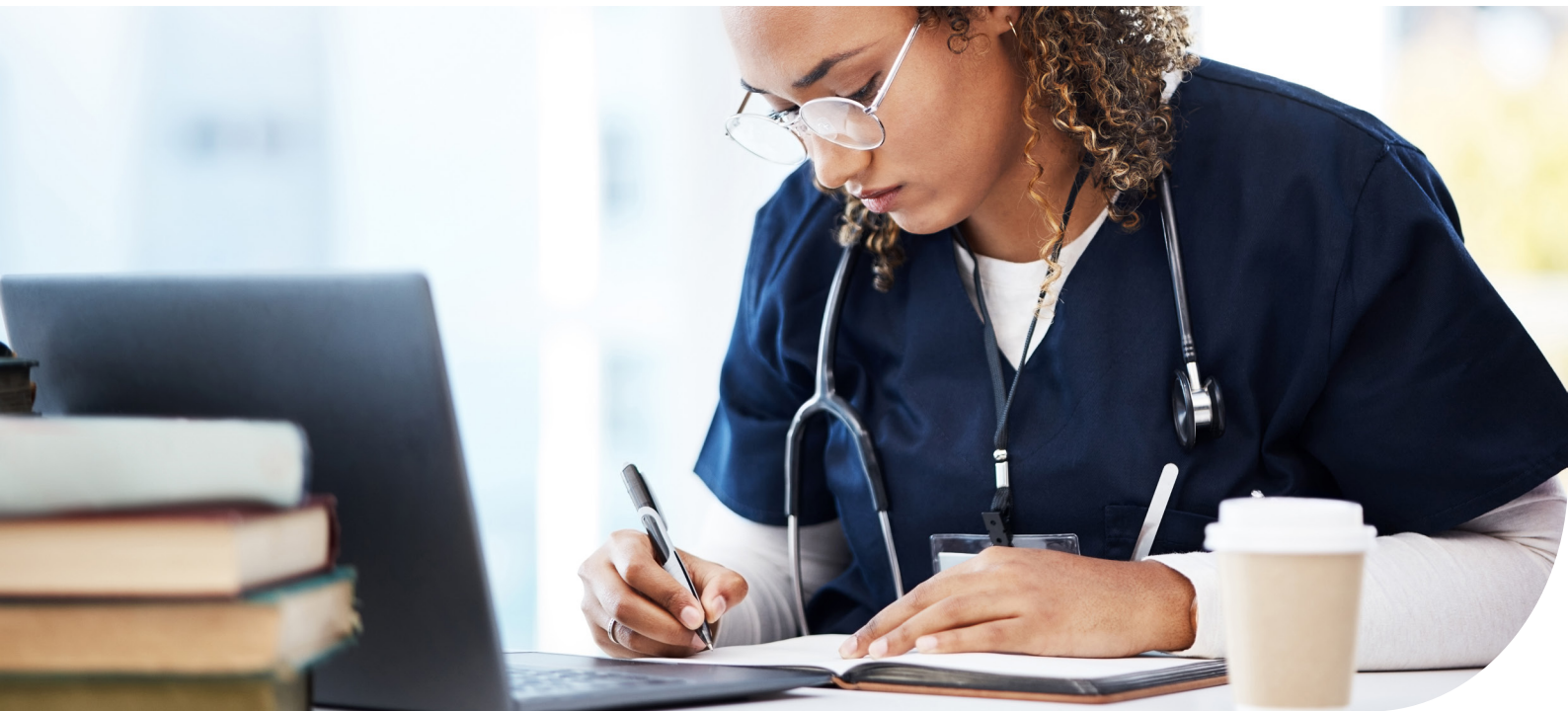
Better  
Skills

Better  
Jobs

Better  
Health

# eLearning courses

Cost effective, quality assured online courses brought to you by the authors of the Core Skills Training Framework®.



## Better skills, better jobs, and better health

Our range of interactive, innovative and sector specific eLearning courses makes it easy for your organisation to fulfil all the latest statutory and mandatory training requirements.

We work with industry - leading subject matter experts to develop and refresh our courses to stay abreast of ever-changing policies and topics in the healthcare sector.

As authors of the Core Skills Training Framework® ([CSTF](#)), we develop our eLearning courses to meet the knowledge outcomes of each subject, ensuring learners can demonstrate understanding of these outcomes and meet compliance requirements. You can purchase courses aligned to each of the subject areas or buy bundles to get access to CSTF aligned courses.

*“Embracing statutory and mandatory training that’s aligned with the Core Skills Training Framework® ensures a standardised foundation of skills and knowledge across the healthcare sector. By meeting these standards, training becomes portable around the system in a powerful way, ensuring consistent quality of care and professional development for all.”*  
**John Rogers, Chief Executive**

Whether you’re looking for courses for a team or to upskill individuals, we have something for everyone.

Our full range of courses are outlined on the following pages. If you’d like to make a purchase, visit [shop.skillsforhealth.org.uk](https://shop.skillsforhealth.org.uk)



Experts in statutory and  
mandatory training



Cost effective



Compliant

# Contents

Courses	Page
Autism Awareness	8
Autism and Learning Disabilities Awareness	8
Blood Transfusion Awareness	8
Blood Transfusion - Clinical	8
Communication	9
Conflict Resolution	9
Consent	9
Control of Substances Hazardous to Health (COSHH)	9
Dementia Awareness	10
Deprivation of Liberty Safeguards (DoLS)	10
Duty of Care	10
Equality, Diversity and Human Rights	10
Fire Safety	11
Fluids and Nutrition	11
Food Safety and Hygiene Essentials	11
Food Safety and Hygiene Level 2	11
Health, Safety and Welfare	12
Infection Prevention and Control - Level 1 - Non-Clinical	12
Infection Prevention and Control - Level 2 - Clinical	12
Information Governance and Data Security	13
Learning Disabilities Awareness	13
Medication Awareness and Safe Handling of Medicines	13

Courses	Page
Medical Gas Training for Nurses	13
Mental Capacity Act (MCA) 2005	14
Mental Health Awareness	14
Moving and Handling - Level 1	14
Moving and Handling - Level 2 - Patient	15
Person-Centred Care	15
Preventing Radicalisation	15
Privacy and Dignity	15
Resuscitation - Level 1 - Basic Life Support	16
Resuscitation - Level 2 - Adult Basic Life Support	16
Resuscitation - Level 2 - Paediatric Basic Life Support	16
Resuscitation - Level 3 - Adult Immediate Life Support	16
Resuscitation - Level 2 - Maternal Basic Life Support	17
Resuscitation - Level 2 - Newborn Basic Life Support	17
Safeguarding Adults - Level 1	17
Safeguarding Adults - Level 2	18
Safeguarding Adults - Level 3	18
Safeguarding Children - Level 1	18
Safeguarding Children - Level 2	19
Safeguarding Children - Level 3	19
Your Healthcare Career	19

# Core Skills Training Framework

The Core Skills Training Framework® is the benchmark standard for statutory and mandatory training in England and Wales.

As authors of the Core Skills Training Framework® (CSTF), we are uniquely placed to offer the highest quality eLearning courses in support of this framework.

The CSTF sets out core learning objectives for specific subjects and aims to enable greater standardisation in training provision in the health sector. This enables people to move more easily between roles and organisations without the need for repetition of training thereby improving efficiency through saved time and resources.

Our courses are written and regularly updated in association with qualified subject matter experts, academic institutions, and professional bodies. We use the latest learning technologies and pedagogic techniques, these to enable delivery to our audiences and users through all devices.



The original framework was released in 2013 and has since been maintained and updated, covering a range of subjects required in the health sector in England and Wales:

- Equality, Diversity and Human Rights
- Fire Safety
- Conflict Resolution
- Health, Safety and Welfare
- Infection Prevention and Control
- Information Governance and Data Security
- Moving and Handling
- Preventing Radicalisation
- Resuscitation
- Safeguarding Adults
- Safeguarding Children
- Violence and Aggression (Wales)

For more information and the latest version of the CSTF [please visit our website](#).

## The Care Certificate

Designed with the non-regulated workforce in mind, the Care Certificate gives employers and service users the confidence that staff have the same introductory skills, knowledge and behaviours to provide compassionate, safe and high-quality care and support.

The Care Certificate was developed by Skills for Health, Health Education England, and Skills for Care. The eLearning provision meets the education aspect of the Care Certificate and is based on the learning objectives of the 15 standards, which individuals need to complete before they can be awarded their Certificate. Staff will still need to undertake the practical assessments in their organisation before being awarded the Certificate.

For more information, please visit the [Skills for Health website](#).

## How to buy our eLearning

It's now easier than ever to buy the eLearning courses you need via our new shop.

[View all courses](#)

If you are looking for something more bespoke or would like to trial any of our eLearning courses, our Client Services team are on hand to help.

### For new clients

Contact Jim Moran, Client Director -  
[jim.moran@wdtrust.org.uk](mailto:jim.moran@wdtrust.org.uk)

### For existing clients

Contact Matt Astbury, Client Services  
Manager - [matt.astbury@wdtrust.org.uk](mailto:matt.astbury@wdtrust.org.uk)

## Licensing Options

Skills for Health offer a number of course licensing options to ensure best value for money.

### Access Licenses

This allows you purchase the number of course access licenses you need from our eLearning Libraries. Either visit the online shop or contact us with you course requirements and we will give you the maximum discount based on your overall requirements.

### Bundle Licenses

Bundle licenses provide access to a collection of courses and provide greater discount. Bundles are purchased based on the number of users that need access and discounted based on the overall volume.

## How to access our eLearning

LearnSpace is our all-in-one solution where you can effortlessly track, manage, and evidence compliance, monitor progress, and streamline training. Our simple and intuitive platform offers flexibility for learners and managers alike – bringing together your eLearning and compliance needs in one place.

From our free entry-level learning management system, LearnSpace Lite, to our customised platform, LearnSpace Enterprise, we offer a range of options to suit your unique needs.

If you already have a learning management system, we can integrate our courses directly with your platform.

[Learn more](#)



# Skills for Health Bundles

Skills for Health offer the following eLearning bundles to make purchasing simple. For bespoke bundles please contact us or visit the [build you own bundle page](#) on our online shop.

## Core Skills Training Framework (CSTF) Bundle

Our most popular bundle consists of [19 CSTF-aligned courses](#) designed to meet all your statutory and mandatory eLearning requirements.

- Conflict Resolution
- Equality, Diversity and Human Rights
- Fire Safety
- Health, Safety and Welfare
- Infection Prevention and Control – Level 1 – Non-Clinical
- Infection Prevention and Control – Level 2 – Clinical
- Information Governance and Data Security
- Moving and Handling – Level 1
- Moving and Handling – Level 2 – Patient
- Preventing Radicalisation
- Resuscitation – Level 1 – Basic Life Support
- Resuscitation – Level 2 – Adult Basic Life Support
- Resuscitation – Level 2 – Paediatric Basic Life Support
- Safeguarding Adults – Level 1
- Safeguarding Adults – Level 2
- Safeguarding Adults – Level 3
- Safeguarding Children – Level 1
- Safeguarding Children – Level 2
- Safeguarding Children – Level 3

[View shop](#)

## Care Certificate Bundle

Includes all the required eLearning course for those working towards the Care Certificate.

- Communication
- Dementia Awareness
- Duty of Care
- Equality, Diversity and Human Rights
- Fluids and Nutrition
- Health, Safety and Welfare
- Infection Prevention and Control – Level 1 – Non-Clinical
- Information Governance and Data Security
- Learning Disabilities Awareness
- Mental Health Awareness
- Person-Centred Care
- Privacy and Dignity
- Resuscitation – Level 1 – Basic Life Support
- Safeguarding Adults – Level 1
- Safeguarding Adults – Level 2
- Safeguarding Children – Level 1
- Safeguarding Children – Level 2
- Your Healthcare Career

[View shop](#)

# Ultimate Bundle

Access [31 Skills for Health courses](#) including aligned to the Care Certificate and the Core Skills Training Framework, providing you with a full suite of quality eLearning.

This bundle includes the following courses:

- Blood Transfusion Awareness
- Blood Transfusion – Clinical
- Communication
- Conflict Resolution
- Consent
- Dementia Awareness
- Duty of Care
- Equality, Diversity and Human Rights
- Fire Safety
- Fluids and Nutrition
- Health, Safety and Welfare
- Infection Prevention and Control – Level 1 – Non-Clinical
- Infection Prevention and Control – Level 2 – Clinical
- Information Governance and Data Security
- Learning Disabilities Awareness
- Mental Health Awareness
- Moving and Handling – Level 1
- Moving and Handling – Level 2 – Patient
- Person-Centred Care
- Preventing Radicalisation
- Privacy and Dignity
- Resuscitation – Level 1 – Basic Life Support
- Resuscitation – Level 2 – Adult Basic Life Support
- Resuscitation – Level 2 – Paediatric Basic Life Support
- Safeguarding Adults – Level 1
- Safeguarding Adults – Level 2
- Safeguarding Adults – Level 3
- Safeguarding Children – Level 1
- Safeguarding Children – Level 2
- Safeguarding Children – Level 3
- Your Healthcare Career

# Build Your Own Bundle

Choose from either [10 courses](#) or [20 courses](#) from the Skills for Health course library and build your own bundle. The bundle is licensed per user and gives the benefit of a greater overall discount. Volume discounts also apply, so once the bundle is in your basket, increase the volume to get a discount.



# Courses

## Autism Awareness

This course contains information on autism diagnoses, how the condition impacts the individual on a day-to-day basis, and the challenges it presents to people who work with or care for individuals affected. It looks at key issues such as the autistic spectrum, the causes of autism, social communication and coping methods.



Duration: 1 hour approx.



Assessment method: Multiple-choice.

## Autism and Learning Disabilities Awareness

The Health and Care Act 2022 introduced a requirement for health and social care providers to provide training for their staff in learning disabilities and autism. By the end of this course, learners will understand the importance and requirements of accommodating the needs of individuals with learning disabilities and autism.



Duration: 3 hours approx.



Assessment method: Multiple-choice.

## Blood Transfusion Awareness

This course provides learners who are not directly involved in the blood transfusion process with a broad understanding of topics such as blood groups, when blood transfusions may be clinically required, the risks and benefits of blood transfusions, and the alternative treatments available.



Duration: 1 hour approx.



Assessment method: Multiple-choice.

## Blood Transfusion - Clinical

This comprehensive course for clinical staff takes you through an understanding of decisions around transfusion, blood sampling, the collection of blood components from storage and delivery to the clinical area, and the administration of blood components.



Duration: 2 hours 30 mins approx.



Assessment method: Multiple-choice.



## Communication

This course provides information and opportunities to practice principles of effective communication in a health or social care setting. It forms part of the Care Certificate, an initiative to prepare healthcare assistants and social care support workers for their roles within care settings in a consistent way.



Duration: 25 mins approx.



Assessment method: Multiple-choice.



Standards and Frameworks: Aligned to The Care Certificate.

## Conflict Resolution

There are occasions when staff in the healthcare sector can experience verbal abuse and, in exceptional circumstances, physically abusive behaviour from patients, other staff or visitors whilst trying to do their jobs. The key aim of this CSTF-aligned course is to make you aware of some of these risks, and help you deal effectively and safely with them.



Duration: 1 hours 10 mins approx.



Assessment method: Multiple-choice.



Standard and Frameworks: Aligned to Core Skills Training Framework.

## Consent

The course help learners understand the key principles of valid consent, when it's necessary, and how to involve children and young people using Gillick competence. It covers the Mental Capacity Act 2005, defining a person with/without capacity, and seeking consent for those lacking capacity.



Duration: 45 mins approx.



Assessment method: Multiple-choice.

## Control of Substances Hazardous to Health (COSHH)

The COSHH is a key piece of legislation keeping employees safe from hazardous chemicals. This course explores these regulations, the different ways substances can harm our bodies and how to spot what substances have what potential effect, as well as how to create a safer and more compliant work environment.



Duration: 1 hour approx.



Assessment method: Multiple-choice.

## Dementia Awareness

This course outlines the main types of dementia, along with their respective symptoms and aims to make the user aware of their interaction with people with dementia. It also encourages healthcare practitioners to find out more about the support that is available to people with dementia.



Duration: 45 mins approx.



Assessment method: Multiple-choice.



Standard and Frameworks: Aligned to The Care Certificate.

## Deprivation of Liberty Safeguards (DoLS)

Deprivation of Liberty Act protects the most vulnerable individuals in hospitals and care homes. It plays an important role in preventing the unlawful deprivation of liberty occurring. The MCA DoLS framework offers safeguards and principles of conduct for anyone working with vulnerable people.



Duration: 1 hour 15 mins approx.



Assessment method: Multiple-choice.

## Duty of Care

This course looks at how duty of care is essential for safe practice, how staff can work through dilemmas and how comments and complaints can improve services. Duty of care is about always acting in the best interests of others and not acting or failing to act in ways that result in harm.



Duration: 1 hour approx.



Assessment method: Multiple-choice.



Standard and Frameworks: Aligned to The Care Certificate.

## Equality, Diversity and Human Rights

This CSTF-aligned course introduces equality, diversity, and human rights. It explores these terms and the benefits of valuing equality, diversity, and inclusion in the workplace and in healthcare. It also introduces the Equality Act 2010 and the Human Right Act 1998.



Duration: 1 hour 20 mins approx.



Assessment method: Multiple-choice.



Standard and Frameworks: Aligned to Core Skills Training Framework and The Care Certificate.

## Fire Safety

This CSTF-aligned course consists of statutory training on the nature and causes of fire in healthcare facilities, with instruction in fire prevention, signage, equipment, and what to do when a fire starts.



Duration: 35 mins approx.



Assessment method: Multiple-choice.



Standard and Frameworks: Aligned to Core Skills Training Framework and The Care Certificate.

## Fluids and Nutrition

This course aims to provide health and social care staff with examples of how they can provide adequate hydration and nutrition for people in their care, including the very young and older people.



Duration: 25 mins approx.



Assessment method: Multiple-choice.



Standard and Frameworks: Aligned to The Care Certificate.

## Food Safety and Hygiene Essentials

This Food Safety and Hygiene Essentials course breaks down the key components to food hazards, food poisoning, food contamination, personal hygiene and food preparation and storage, via a short and accessible course.



Duration: 30 mins approx.



Assessment method: Multiple-choice.

## Food Safety and Hygiene Level 2

In this course, you'll learn about food safety standards and UK regulations, how to manage kitchen risks, prevent contamination, implement HACCP, handle allergies, and maintain personal hygiene for safer food practice.



Duration: 3 hours 40 mins approx.



Assessment method: Multiple-choice.

## Health, Safety and Welfare

This course covers the responsibilities of both employers and employees in ensuring that facilities are safe for staff, patients and visitors. It covers how to manage risk, the procedures for reporting health and safety violations, and emphasises everyone's legal duty for each other's safety at work.



Duration: 1 hour 30 mins approx.



Assessment method: Multiple-choice.



Standard and Frameworks: Aligned to Core Skills Training Framework and The Care Certificate.

## Infection Prevention and Control - Level 1 - Non-Clinical

Infection prevention and control is a major priority for the health sector and included as part of the Core Skills Training Framework (CSTF). This course has been developed for all staff working in the health sector, to ensure that all staff share the same understanding and good practice in this area.



Duration: 1 hour 20 mins approx.



Assessment method: Multiple-choice.



Standard and Frameworks: Aligned to Core Skills Training Framework and The Care Certificate.

## Infection Prevention and Control - Level 2 - Clinical

This course deals with the fundamentals and principals involved in preventing healthcare associated infections. You will also learn how you should manage them and apply your principles of infection control knowledge in practice.



Duration: 2 hours 45 mins approx.



Assessment method: Multiple-choice.



Standard and Frameworks: Aligned to Core Skills Training Framework.

## Information Governance and Data Security

Information governance is essential training for all healthcare staff. This course aims to introduce information governance including the principles of confidentiality, data protection, subject access requests, freedom of information requests, and security best practice.



Duration: 1 hour 15 mins approx.



Assessment method: Multiple-choice.



Standard and Frameworks: Aligned to Core Skills Training Framework and The Care Certificate.

## Learning Disabilities Awareness

This course helps learners understand the issues surrounding learning disabilities including the relationship between learning disabilities, autism, and attention deficit hyperactivity disorder (ADHD), helping learners reflect on and improve how they care for people with learning disabilities.



Duration: 30 mins approx.



Assessment method: Multiple-choice.



Standard and Frameworks: Standard and Frameworks: Aligned to The Care Certificate.

## Medication Awareness and Safe Handling of Medicines

This course introduces the procedures that should be followed when taking charge of someone's medication outside of a health setting. It covers requesting prescriptions, maintaining records, storing, administering and disposing of medication, self-medication and issues that might arise.



Duration: 1 hour approx.



Assessment method: Multiple-choice.

## Medical Gas Training For Nurses

This course provides medical gas training for nurses and clinical healthcare professionals to HTM02 (SHTM02) standards. It equips learners with the skills and knowledge necessary to safely work with medical gases. The training covers general regulations, clinical applications, safety systems, and storage of medical gases.



Duration: 1 hour 30 mins approx.



Assessment method: Multiple-choice.

## Mental Capacity Act (MCA) 2005

This course covers how to make decisions in a person's best interests, how to accurately assess someone's mental capacity and when and why to use restraint. It also covers advance decisions, the role of the Court of Protection and Independent Mental Capacity Advocates (IMCAs) and how mental capacity assessment works.



Duration: 1 hour 45 mins approx.



Assessment method: Multiple-choice.

## Mental Health Awareness

This course is an overview of mental health and is aimed at anyone working in a healthcare environment. It outlines the main types of mental health conditions, along with their respective symptoms and treatments and aims to raise awareness of a healthcare professional's interaction with people who have mental health illnesses.



Duration: 30 mins approx.



Assessment method: Multiple-choice.



Standard and Frameworks: Aligned to The Care Certificate.

## Moving and Handling - Level 1

This CSTF-aligned course, aimed at healthcare staff, explains what moving and handling is and how an injury might affect you. It explores why we need to manage risk when completing manual handling tasks and how we assess these risks and the principles of safer handling.



Duration: 50 mins approx.



Assessment method: Multiple-choice.



Standard and Frameworks: Aligned to Core Skills Training Framework and The Care Certificate.

## Moving and Handling - Level 2 - Patient

This session introduces patient moving and handling and supports the practical training you need. While this course offers foundational knowledge, it's essential to complement it with tailored practical training that addresses your specific needs, work environment, and job requirements.



Duration: 45 mins approx.



Assessment method: Multiple-choice.



Standard and Frameworks: Aligned to Core Skills Training Framework.

## Person-Centred Care

This course explores concepts of person-centred care, their application in practice, teams, and organisations. It presents examples of good and poor care, prompts self-assessment for development, and utilises reflective learning techniques for better understanding and practice.



Duration: 30 mins approx.



Assessment method: Multiple-choice.



Standard and Frameworks: Aligned to The Care Certificate.

## Preventing Radicalisation

This CSTF-aligned course aims to familiarise you with the government's counter-terrorism strategy: CONTEST, with specific focus on the Prevent Strategy. The course includes basic awareness as well as how to support vulnerable individuals at risk and share concerns.



Duration: 1 hour 30 mins approx.



Assessment method: Multiple-choice.



Standard and Frameworks: Aligned to Core Skills Training Framework.

## Privacy and Dignity

This course aims to focus the learners' attention on the different ways that privacy and dignity can be maintained or undermined in various health and social care settings. The course uses case studies to illustrate examples of poor and good care and encourages learners to reflect on their practice.



Duration: 30 mins approx.



Assessment method: Multiple-choice.



Standard and Frameworks: Aligned to Core Skills Training Framework.

## Resuscitation - Level 1 - Basic Life Support

Resuscitation can increase the chance of survival when a person is under cardiac arrest. This CSTF-aligned course explains what can cause a cardiac arrest, how to recognise when a cardiac arrest is happening, and how to respond.



Duration: 1 hour approx.



Assessment method: Multiple-choice.



Standard and Frameworks: Aligned to Core Skills Training Framework and The Care Certificate.

## Resuscitation - Level 2 - Adult Basic Life Support

Building on Resuscitation - Level 1 - Basic Life Support, this interactive learning will help you understand both legal and practical knowledge on policy, emergency response, chest compressions, airway management, and the use of lung ventilations and automated external defibrillators (AEDs).



Duration: 1 hour 45 mins approx.



Assessment method: Multiple-choice.



Standard and Frameworks: Aligned to Core Skills Training Framework and The Care Certificate.

## Resuscitation - Level 2 - Paediatric Basic Life Support

This course focuses on your role in emergency response and interventions for basic life support in children. The course covers legal and practical aspects, including policy awareness, chest compressions, airway management, and the use of lung ventilations and automated external defibrillators (AEDs).



Duration: 1 hour 50 mins approx.



Assessment method: Multiple-choice.



Standard and Frameworks: Aligned to Core Skills Training Framework.

## Resuscitation - Level 3 - Adult Immediate Life Support

In this CSTF aligned course, you will find information on the safe procedures relating to the resuscitation of adults, from early recognition to the Airway, Breathing, Circulation, Disability, Exposure (ABCDE) assessment, to non-technical skills and post-resuscitation care.



Duration: 30 mins approx.



Assessment method: Multiple-choice.



Standard and Frameworks: Aligned to Core Skills Training Framework.



## Resuscitation - Level 2 - Maternal Basic Life Support

This course covers physiological and anatomical changes in pregnancy affecting cardiac arrest management. It explores reversible causes, outlines steps for assessing a pregnant patient in cardiac arrest and adapts the basic life support (BLS) algorithm.



Duration: 45 mins approx.



Assessment method: Multiple-choice.

## Resuscitation - Level 2 - Newborn Basic Life Support

This CSTF-aligned course examines the causes, risk factors, and stages of newborn hypoxia. It also covers the essentials of newborn life support and outlines roles and responsibilities in managing cardiac arrest in newborn infants.



Duration: 1 hour approx.



Assessment method: Multiple-choice.



Standard and Frameworks: Aligned to Core Skills Training Framework.

## Safeguarding Adults - Level 1

This course provides healthcare staff with an introduction to the key concepts and principles of safeguarding adults. The course uses real-world scenarios across a range of healthcare settings and roles to stimulate discussion and reflection on how individual staff should consider safeguarding in their role.



Duration: 1 hour 30 mins approx.



Assessment method: Multiple-choice.



Standard and Frameworks: Aligned to Core Skills Training Framework.

## Safeguarding Adults - Level 2

This course centres around preventing, identifying and responding to safeguarding adults concerns by applying the principles of the Mental Capacity Act. It provides knowledge about responsibilities to raise concerns, awareness of how your own values and beliefs may affect your judgement, and keeping detailed records.



Duration: 2 hours approx.



Assessment method: Multiple-choice.



Standard and Frameworks: Aligned to Core Skills Training Framework.

## Safeguarding Adults - Level 3

This course highlights relevant competencies required where staff engage in assessing, planning, and evaluating the needs of adults where there are safeguarding concerns. This includes appropriate supervision of staff involved in actual or potential safeguarding issues, information gathering and making informed decisions.



Duration: 1 hours 25 mins approx.



Assessment method: Multiple-choice.



Standard and Frameworks: Aligned to Core Skills Training Framework.

## Safeguarding Children - Level 1

This course provides healthcare staff with an introduction to the key concepts and principles of safeguarding children. The course uses a number of real-world scenarios across a range of healthcare settings and roles to stimulate discussion and reflection on how staff should consider safeguarding in their role.



Duration: 2 hours 35 mins approx.



Assessment method: Multiple-choice.



Standard and Frameworks: Aligned to Core Skills Training Framework and The Care Certificate.

## Safeguarding Children - Level 2

This course explores the statutory responsibilities for certain professional groups (including police, teachers and healthcare staff) regarding safeguarding children and child protection. The course provides staff with a more detailed understanding of the issues associated with safeguarding children and child protection.



Duration: 2 hours 30 mins approx.



Assessment method: Multiple-choice.



Standard and Frameworks: Aligned to Core Skills Training Framework.

Safeguarding Children level 1 is a prerequisite for level 2.

## Safeguarding Children - Level 3

This course aims to provide healthcare staff who work with children and young people, families, or parents/ carers with a detailed understanding of utilising a child and family-focussed approach to identifying the possible signs of child maltreatment and offering appropriate support.



Duration: 3 hours 15 mins approx.



Assessment method: Multiple-choice.



Standard and Frameworks: Aligned to Core Skills Training Framework.

Safeguarding Children level 1 and level 2 are prerequisites for level 3.

## Your Healthcare Career

This content encourages healthcare newcomers to reflect on their roles, covering aspects like codes of conduct, collaborating with colleagues, skill development through shadowing and mentoring, and the significance of raising concerns within their organisations or with supervisory bodies.



Duration: 25 mins approx.



Assessment method: Multiple-choice.



Standard and Frameworks: Aligned to The Care Certificate.

## Other courses

We offer over 2,000 courses from our trusted partners in a range of topics.

Asbestos Awareness  
Bullying and Harassment  
Catheter Care  
Challenging Behaviour  
Changing Difficult Behaviour  
Chaperoning  
Children Workforce Induction  
Data Protection Act  
Developing as a Leader and Manager  
Diabetes Awareness  
Domestic Abuse and Intimate Partner Violence  
Duty of Candour  
Effective Communication - for Health and Social Care  
Effective Communication in the Workplace  
Effective Communication with Children and Families  
Emotional Abuse  
Epilepsy Awareness  
Excellent Customer Service  
Falls and Fractures in the Elderly  
Female Genital Mutilation  
Fighting Fraud in Local Government  
Fire Warden for Care  
First Aid eLearning  
Food Allergy Awareness  
Food Safety Level 1 - 3  
Framework for the Assessment of Children and their Families  
Freedom of Information Act 2000  
General Data Protection Regulation (GDPR) – Board Training  
General Data Protection Regulation (GDPR) – Core Training (for Staff)  
General Data Protection Regulation (GDPR) – Foundation Training  
Giving and Receiving Feedback  
HACCP: Level 2 and 3

Information Sharing and Consent  
Keeping Good Records  
LGBTQ+ Awareness  
Leadership  
Legionella and Legionnaire's Disease Awareness  
Loneliness and Isolation  
Manual Handling Course  
Mental Capacity Act with Deprivation of Liberty Safeguards  
Microsoft 365 - PowerPoint  
Microsoft 365 - PowerPoint  
Office 365 - Excel 2019  
Palliative Care and End of Life Care  
Parkinson's Disease Awareness  
People Skills  
Personal Safety - Lone worker  
Record Keeping  
Resilience  
Risk Assessment in the Workplace  
Self-Harm  
Sepsis Awareness  
Sexual Abuse and Recognising Grooming  
Slips and Trips  
Stress in the Workplace  
Stroke Awareness  
Substance Misuse  
Teenage Pregnancy  
Types and Causes of Urinary Incontinence  
Unconscious Bias  
Understanding Behaviour of Children and Young People  
Urinary Incontinence - an Introduction  
Violence Reduction



Better  
**Skills**

Better  
**Jobs**

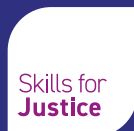
Better  
**Health**

## Skills for Health

Vertigo,  
Cheese Lane,  
Bristol, BS2 0JJ  
Tel: 020 3074 1222



The  
Workforce  
Development  
Trust



England and Wales charity no. 1143246  
Scotland charity no. SC045901